

# *Çatalhöyük Excavations: The 2009–2017 Seasons*

Edited by  
Ian Hodder

## Colour figures for Chapter 22. Building 77

Burcu Tung



*Figure 22.1. Building 77 in 2008, facing north (photograph by Jason Quinlan).*



*Figure 22.4. North-facing view of main room (Sp.336) of B.77 in 2008 (photograph by Jason Quinlan).*



*Figure 22.5. Image-based 3D model of B.77 midway through its excavation (model built by Maurizio Forte and Nicola Lercari).*





Figure 22.6. Western wall (F.3097) of B.77. Facing west (photograph by Jason Quinlan).



Figure 22.7. Eastern wall F.3095, with engaged posts F.6055 to the north and F.6056 to the south. Facing east (photograph by Jason Quinlan).



Figure 22.8. Posts F.7593, F.7594 and F.7595 placed parallel to division wall F.3098. West facing (photograph by Daniel Eddisford).



Figure 22.9. The double-based post cut (19599) for post F.7593, facing west (photograph by Susan Hyden).



Figure 22.11. Burial F.7609, skeleton (21602). Facing north (orthophoto from a 3D model produced by Scott Haddow).



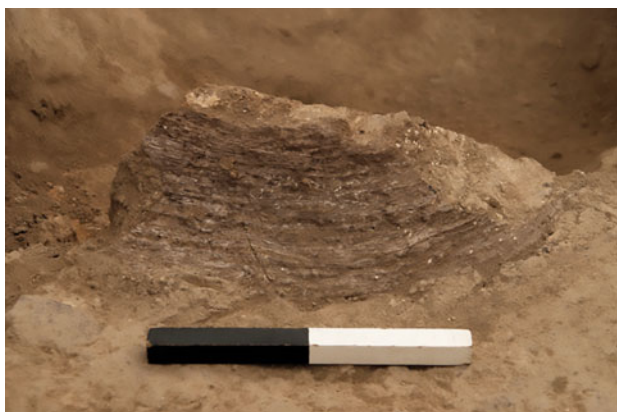


Figure 22.12. Top section of the basket, before having been block lifted. This would have been the neck area of the basket (photograph by Jason Quinlan).



Figure 22.13. Burial F.7309, skeleton (30173) (orthophoto from a 3D model produced by Scott Haddow).



Figure 22.14. Burial F.7133, skeleton (20685) (orthophoto from a 3D model produced by Scott Haddow).



Figure 22.15. North-facing overview of side room Sp.337 (left side of image) in 2008. A clay funnel sits in front of bin complex F.3092 (upper left). This piece may have been the mouthpiece for one of the compartments (photograph by Jason Quinlan).



Figure 22.16. East-facing view of double bin F.3092 prior to its excavation in 2010 (photograph by Max Rosefigura).





Figure 22.17. Secondary support wall to F.3092, through which the bins may have also been accessed (photograph by Max Rosefigura).



Figure 22.18. The triple basin structure F.3091 prior to its excavation in 2010 (photograph by Max Rosefigura).



Figure 22.20. Moulding F.6070, conserved and reconstructed in 2009 (photograph by Duygu Çamurcuoğlu).





Figure 22.21. Incised panel F.8133 (photograph by Jason Quinlan).



Figure 22.23. Bin F.3613. Notice how the construction of the bin seals the incised panel. The feature was later incorporated into F.6050 (photograph by Jason Quinlan).



Figure 22.24. The first two prints discovered in 2010. The prints are in fact much earlier than the bucranium, which remains out of phase in this photograph (photograph by Jason Quinlan).





Figure 22.26. Perpendicular handprints on the eastern wall (photograph by Jason Quinlan).



Figure 22.27. Single red hand from the three hands found on the eastern wall in 2012 (photograph by Jason Quinlan).



Figure 22.28. The red hand panel as discovered in 2011. It is clear from this image that the prints are contemporary with the red paint that covered niche F.6057 (photograph by Jason Quinlan).



Figure 22.30. Northwest-facing overview of the north-western platform F.3611 at the end of phase B.77.5. Traces of red paint adorn the southern and eastern edges of the platform (photograph by Daniel Eddisford).



Figure 22.31. Geometric design F.8148, as first uncovered in 2010 by the eastern platform on the lower half of the surviving wall (photograph by Jason Quinlan).



Figure 22.32. Upper part of the geometric design (19469), F.8148 on the eastern wall of B.77 (photograph by Jason Quinlan).





*Figure 22.34. Oven (F.7108) superstructure and earliest floor. Note that wall F.3096 was excavated before the oven was revealed (photograph by Jason Quinlan).*



*Figure 22.35. 'Bin' F.6050 at the end of the building's life history (photograph by Jason Quinlan).*



*Figure 22.36. The horned pedestals soon after they were exposed in 2008 (photograph by Michael House).*



*Figure 22.37. The cores of the horned pedestals (photographs by Jason Quinlan).*





Figure 22.38. Bucranium F.6063 on the northern wall of B.77 (photograph by Jason Quinlan).



Figure 22.39. Niche F.6063, carved into the northern wall of B.77, in 2008, immediately after its exposure (photograph by Jason Quinlan).



Figure 22.40. Basin F.3605 (photograph by Michael House).



Figure 22.41. Female adult skeleton (20683) in burial F.3687 (photograph by Susan Hyden).



Figure 22.42. Carefully arranged skeleton (19541) and cranium (19544) to the east of the context within burial F.3697. Facing north (photograph by Jason Quinlan).





*Figure 22.43. Stone palette found immediately beneath cranium (19500) (photograph by Dan Eddisford).*



*Figure 22.44. Carbonised brain tissue within cranium (19500) (photograph by Dan Eddisford).*



*Figure 22.46. Overview of the southern activity area associated with platform F.6060 (photograph by Jason Quinlan).*



*Figure 22.47. North-facing overview of northern and eastern activity areas in Sp.336 in the final phase of B.77 (photograph by Jason Quinlan).*