

Çatalhöyük Excavations: The 2009–2017 Seasons

Edited by
Ian Hodder

Scalable figures for Chapter 34. The Gdańsk (GDN) Area excavations and building archaeology research project

Marek Z. Barański

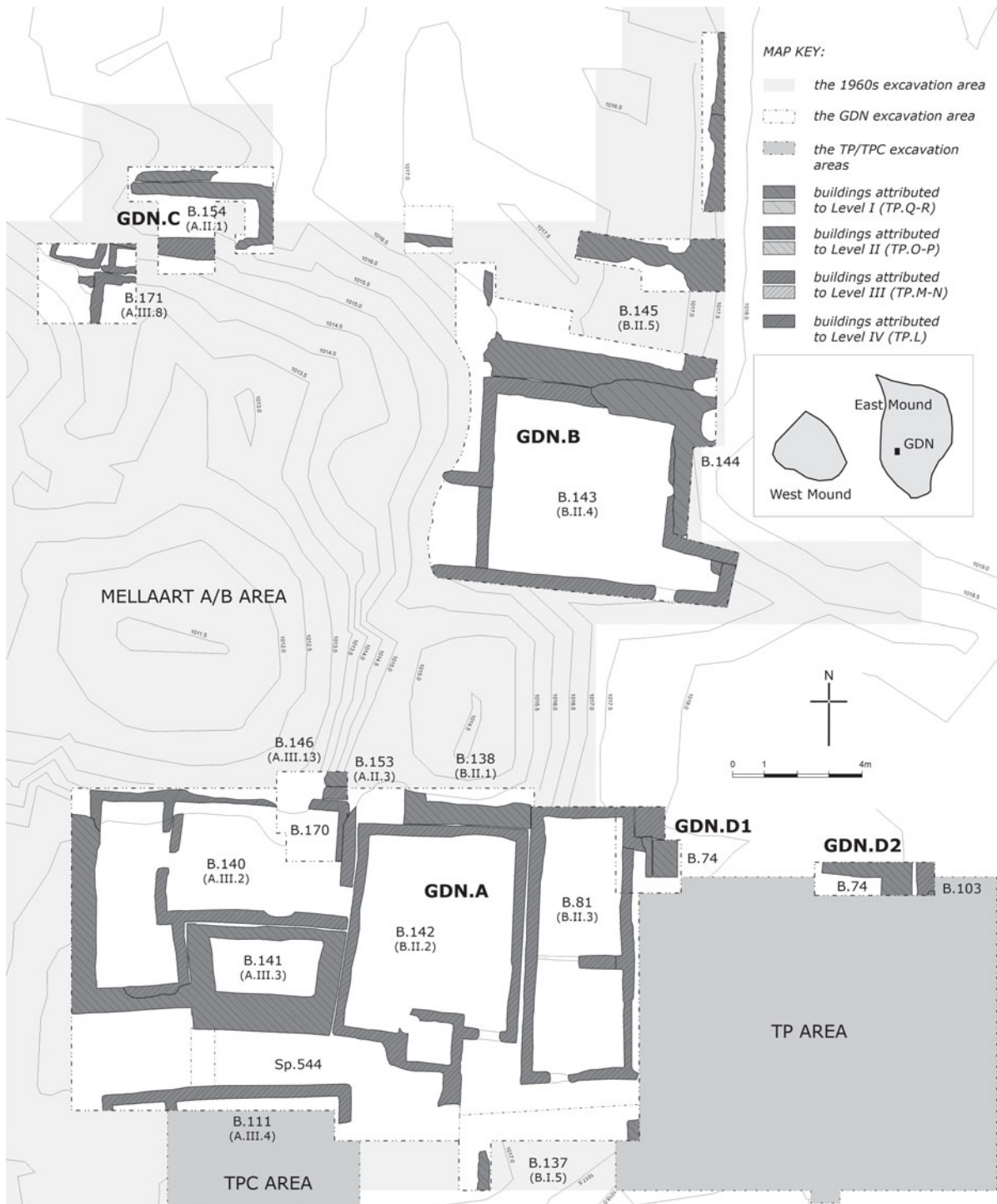


Figure 34.1. Location of the GDN Area on the Çatalhöyük East Mound (plan by Marek Z. Barański).



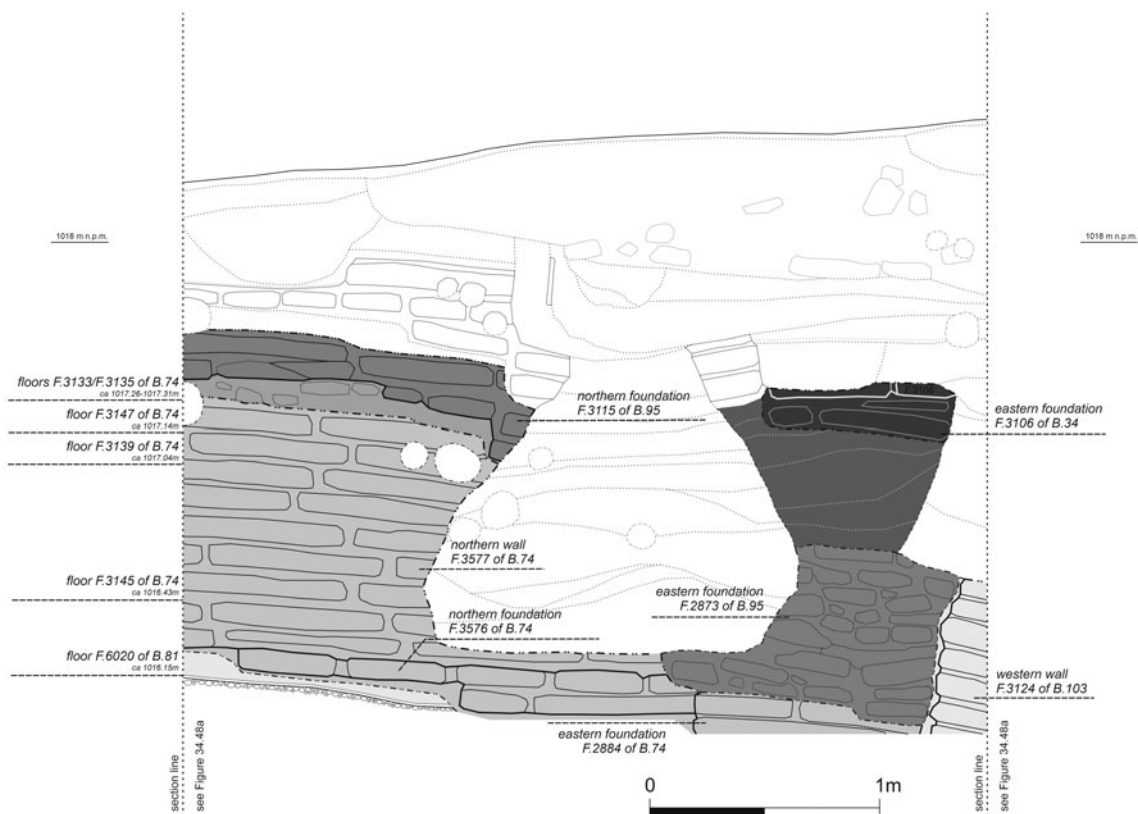


Figure 34.38. Northern GDN cross section in Trench D2 (illustration by Marek Z. Barański).

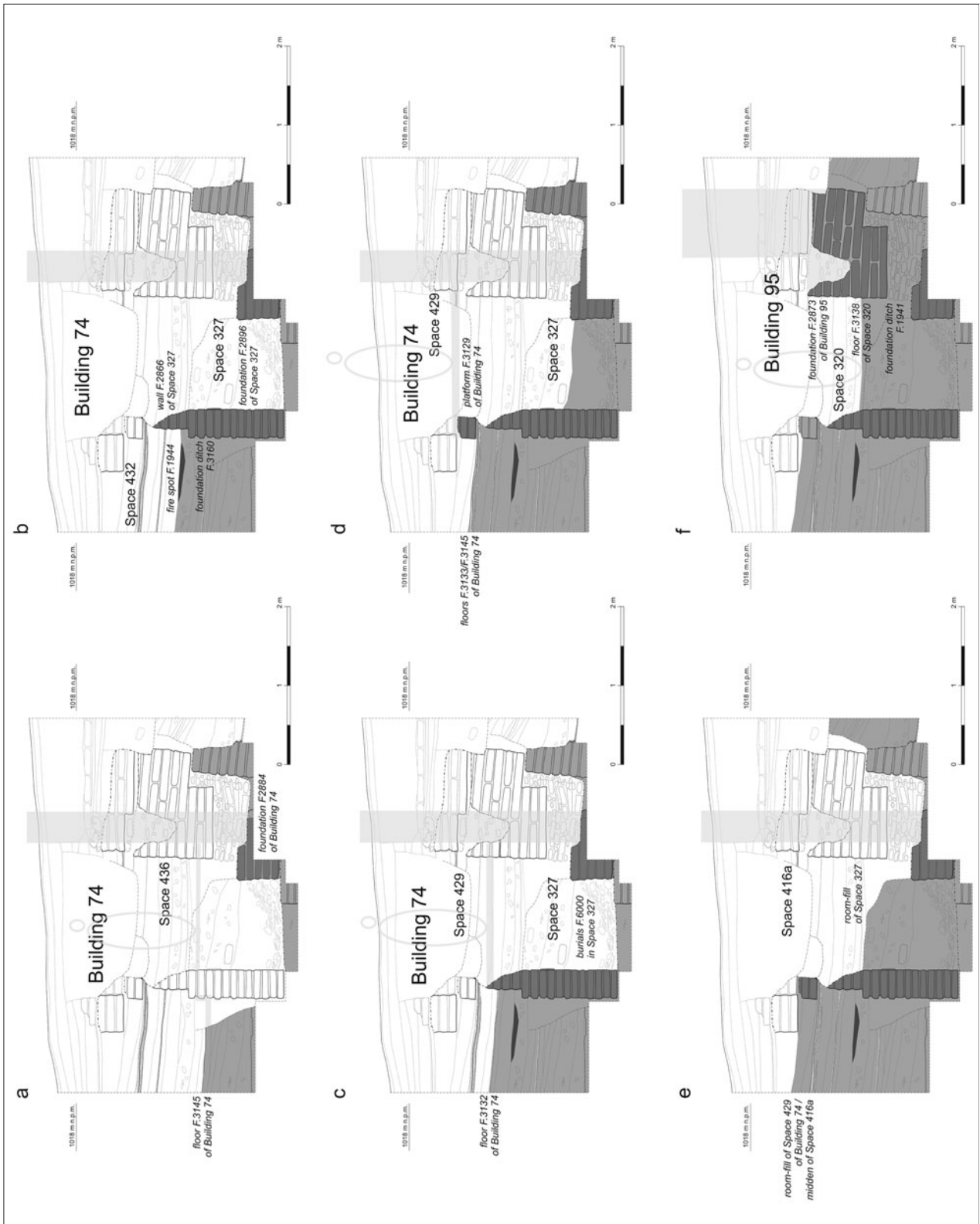


Figure 34.40. Cross section through burial chamber Space 327 in the TP Area (after Barański 2017: fig. 81).

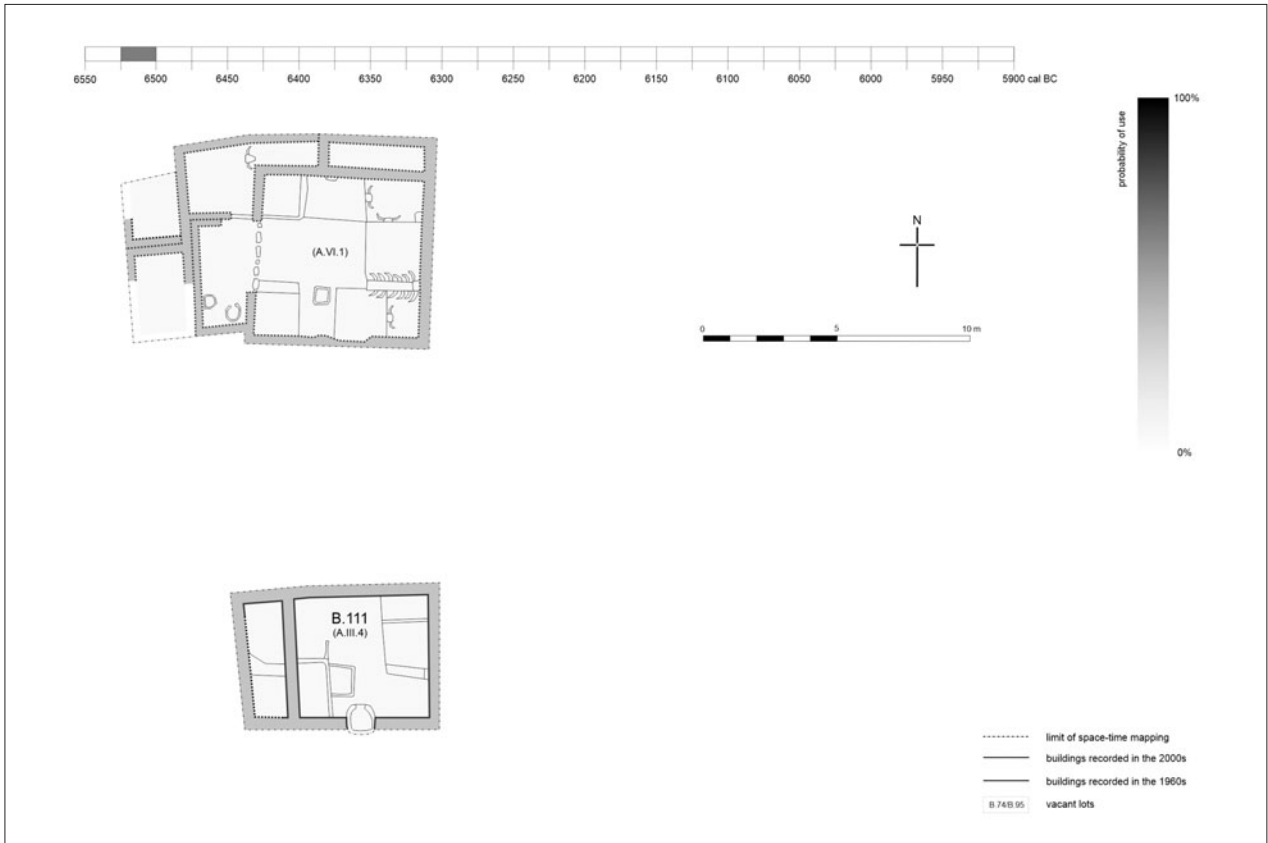


Figure 34.52. Plan of the uppermost area of the East Mound in 6525–6500 cal BC.



Figure 34.53. Plan of the uppermost part of the East Mound in 6500–6475 cal BC.



Figure 34.54. Plan of the uppermost part of the East Mound in 6475–6450 cal BC.



Figure 34.55. Plan of the uppermost part of the East Mound in 6450–6425 cal BC.



Figure 34.56. Plan of the uppermost part of the East Mound in 6425–6400 cal BC.



Figure 34.57. Plan of the uppermost part of the East Mound in 6400–6375 cal BC.

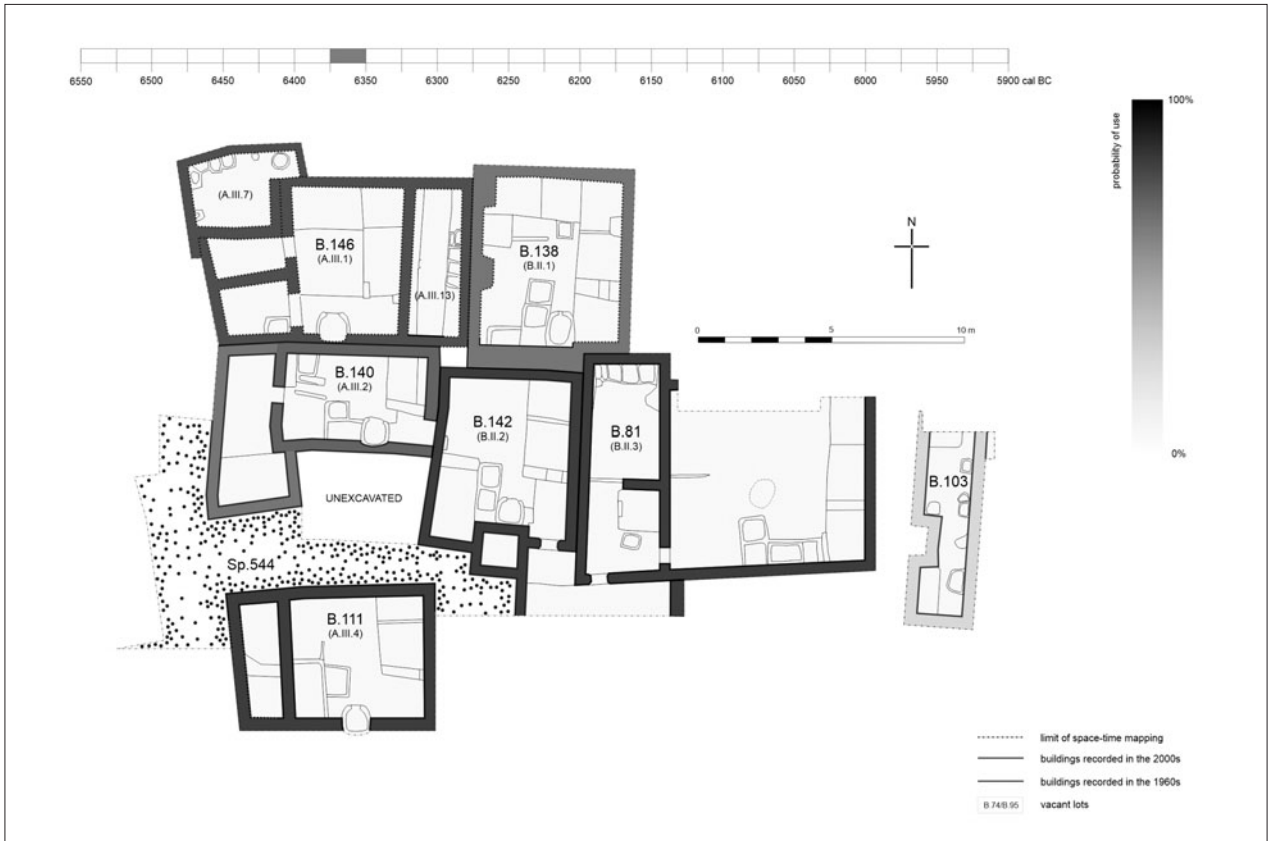


Figure 34.58. Plan of the uppermost part of the East Mound in 6375–6350 cal BC.



Figure 34.59. Plan of the uppermost part of the East Mound in 6350–6325 cal BC.

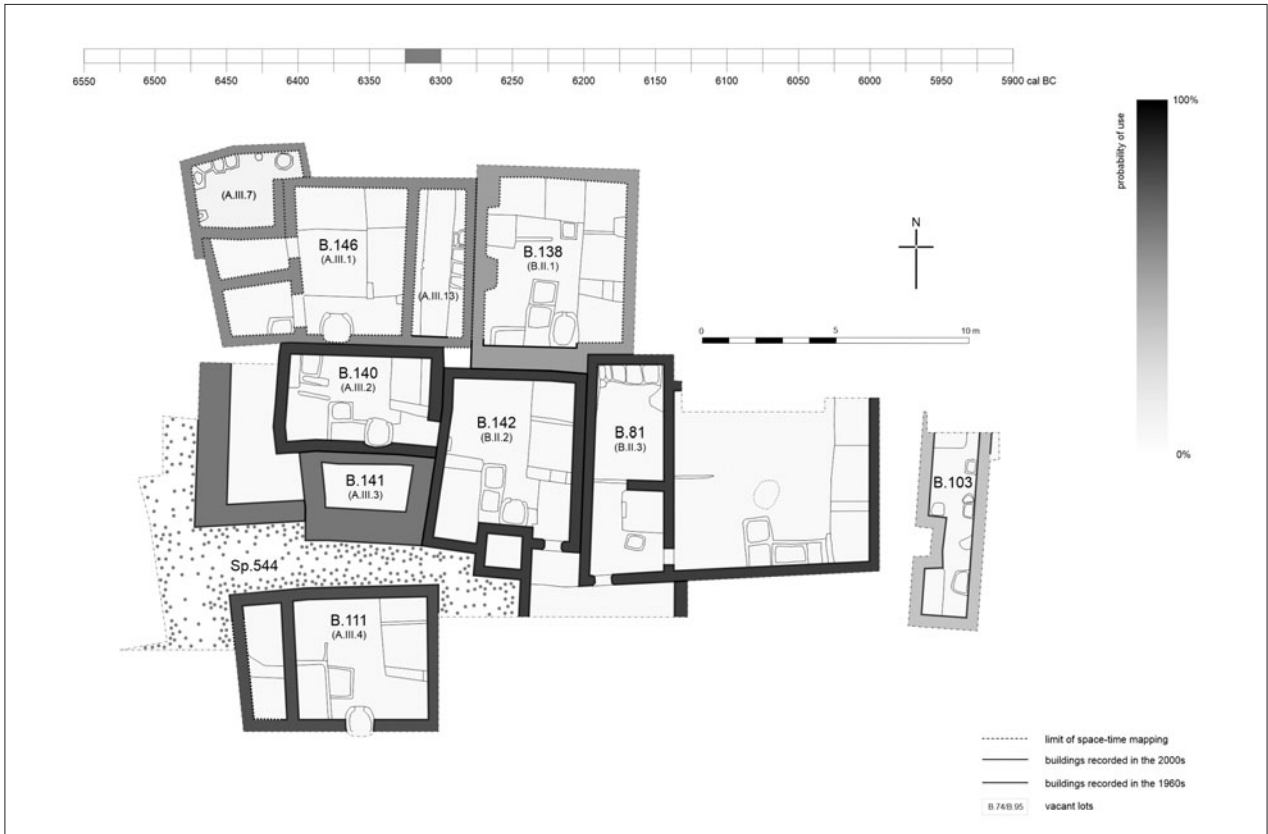


Figure 34.60. Plan of the uppermost part of the East Mound in 6325–6300 cal BC.



Figure 34.61. Plan of the uppermost part of the East Mound in 6300–6275 cal BC.

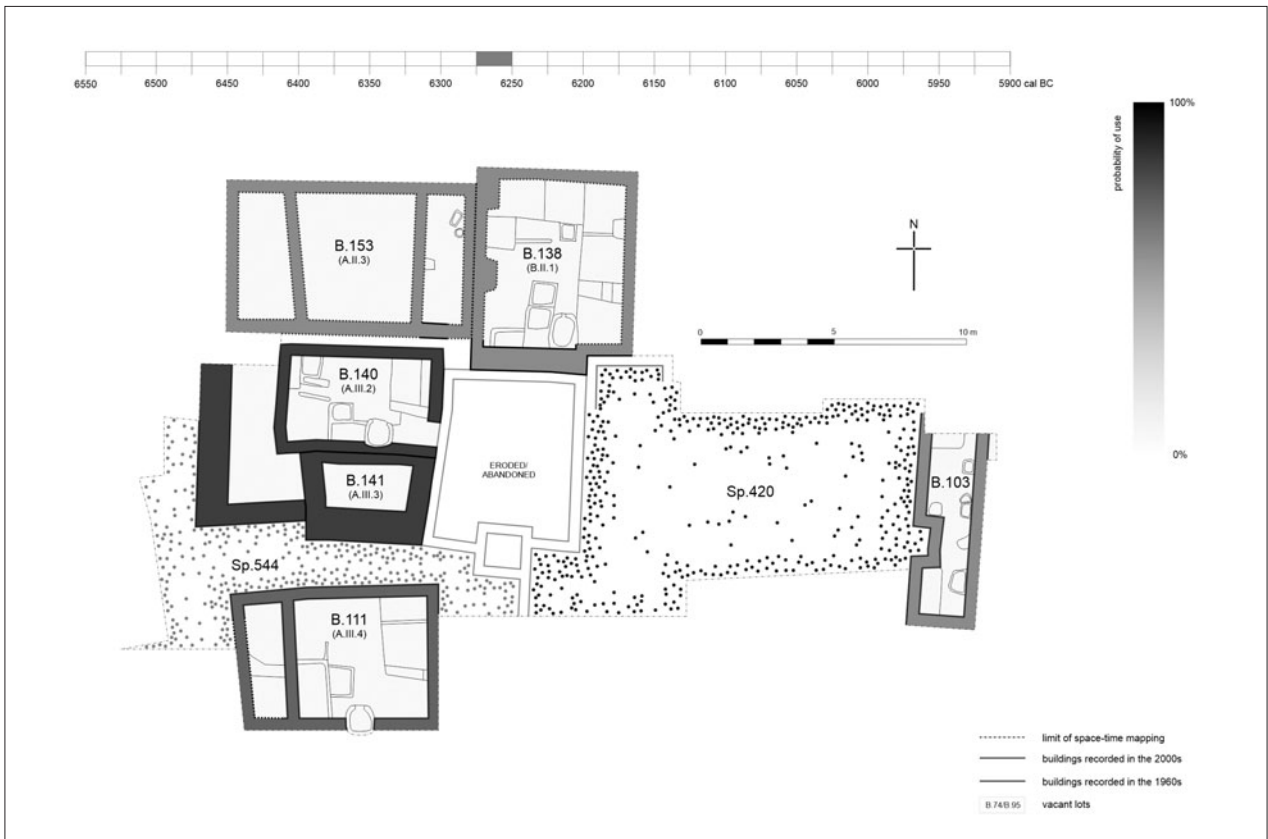


Figure 34.62. Plan of the uppermost part of the East Mound in 6275–6250 cal BC.

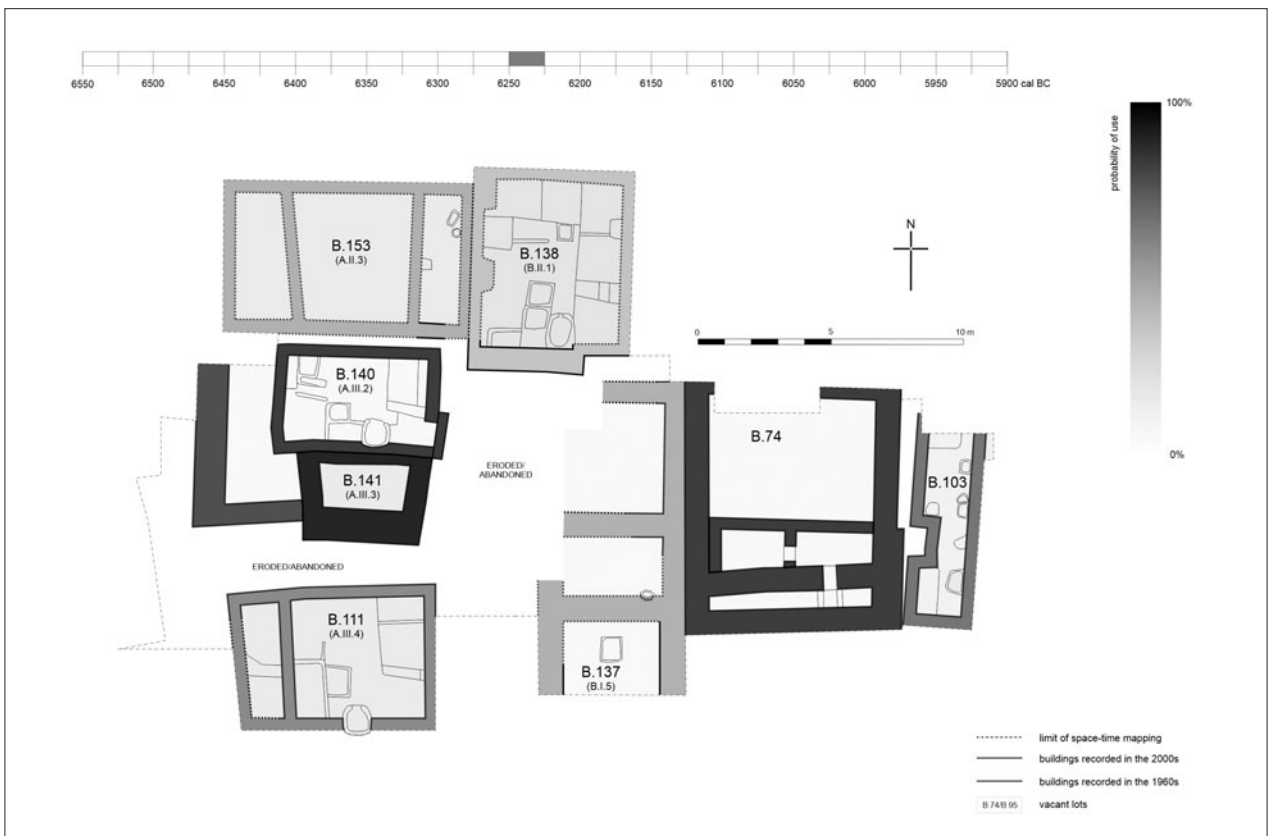


Figure 34.63. Plan of the uppermost part of the East Mound in 6250–6225 cal BC.

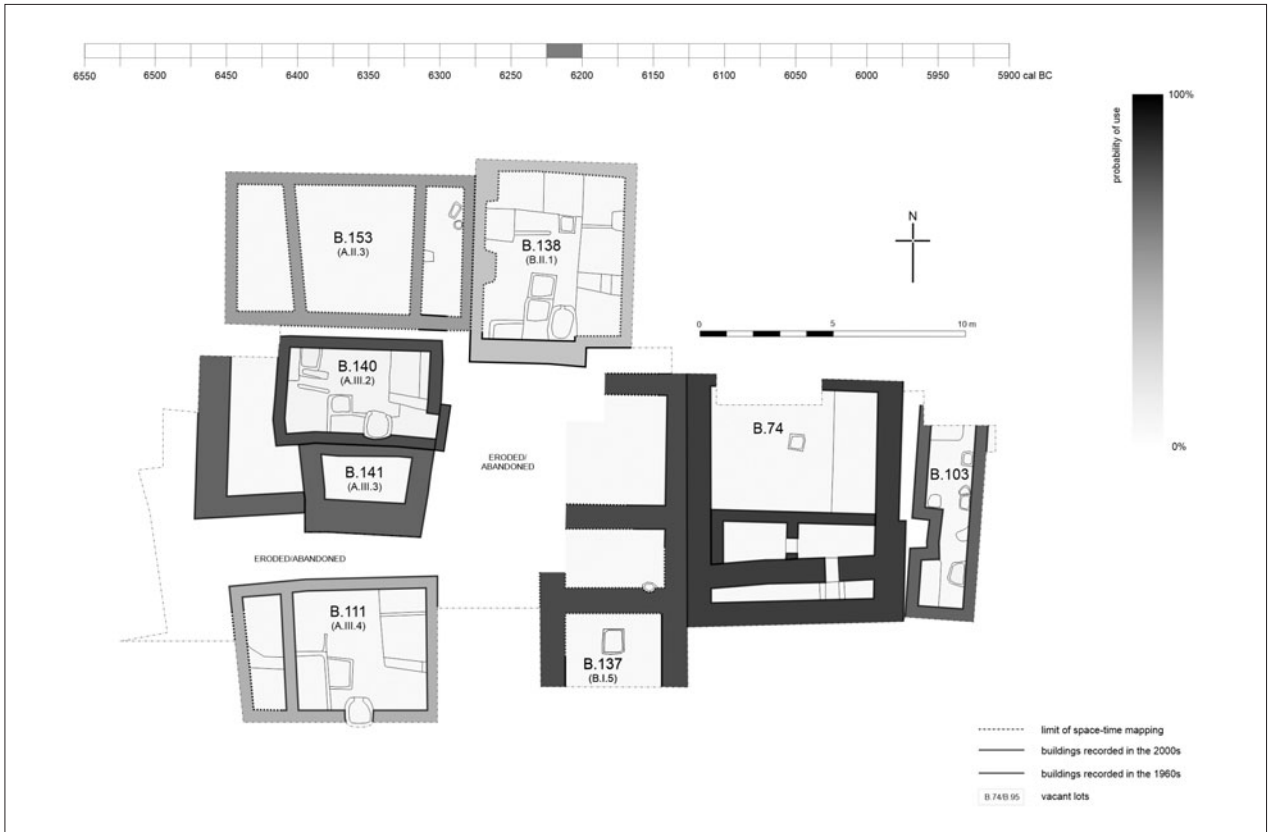


Figure 34.64. Plan of the uppermost part of the East Mound in 6225–6200 cal BC.

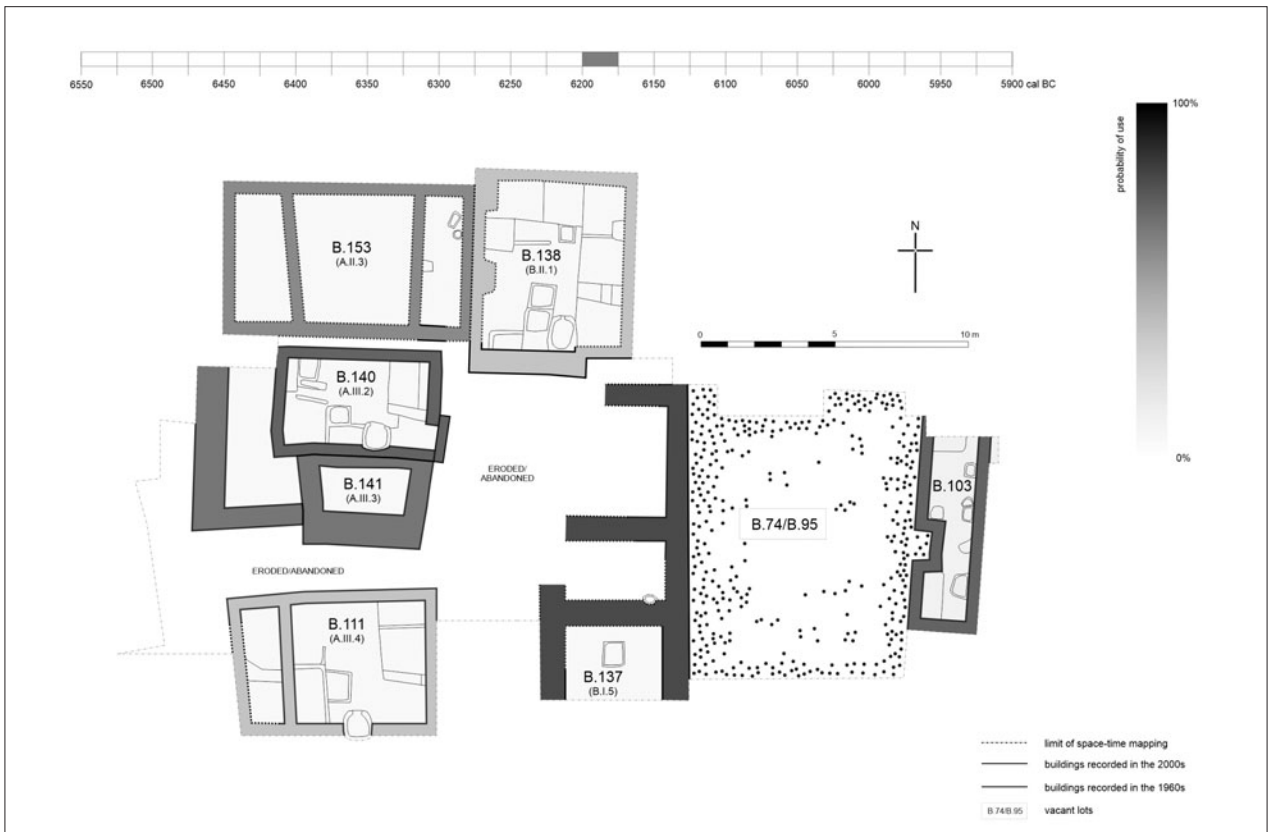


Figure 34.65. Plan of the uppermost part of the East Mound in 6200–6175 cal BC.

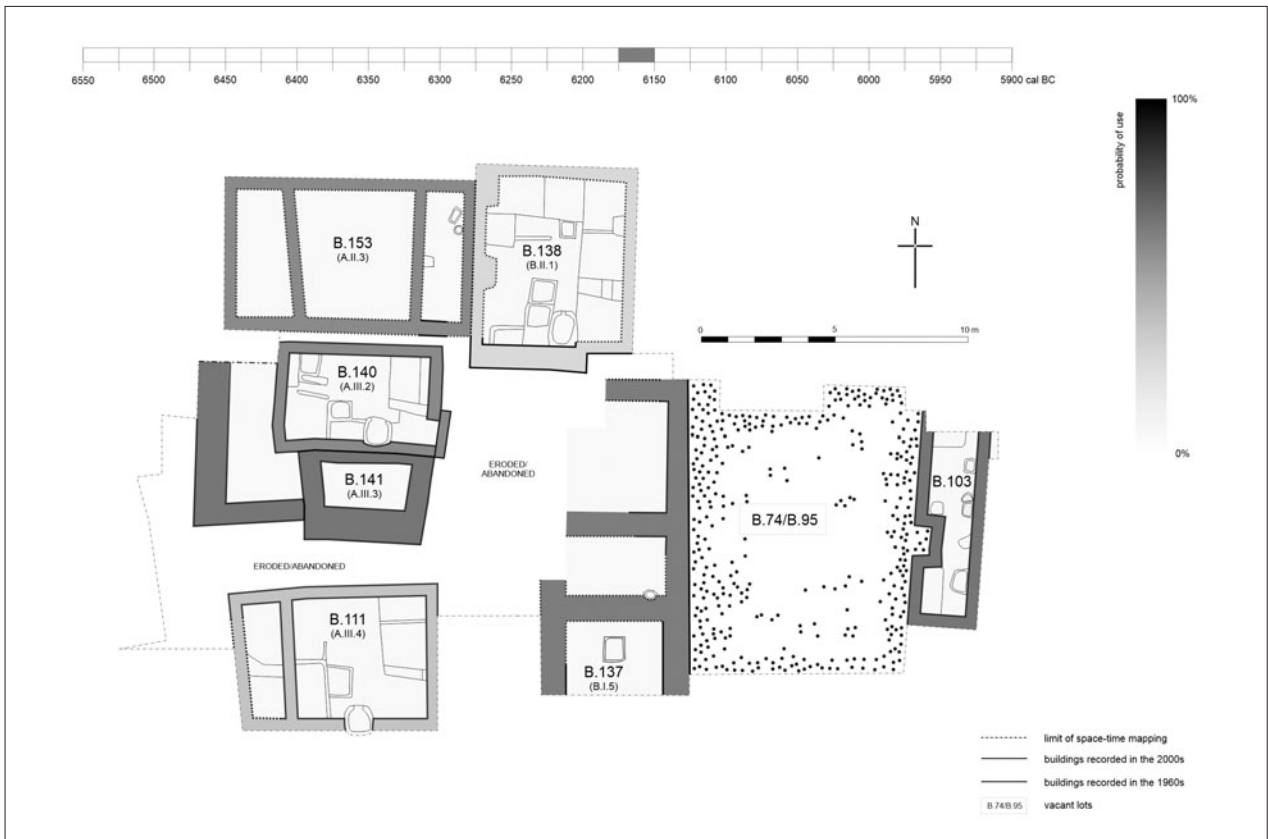


Figure 34.66. Plan of the uppermost part of the East Mound in 6175–6150 cal BC.

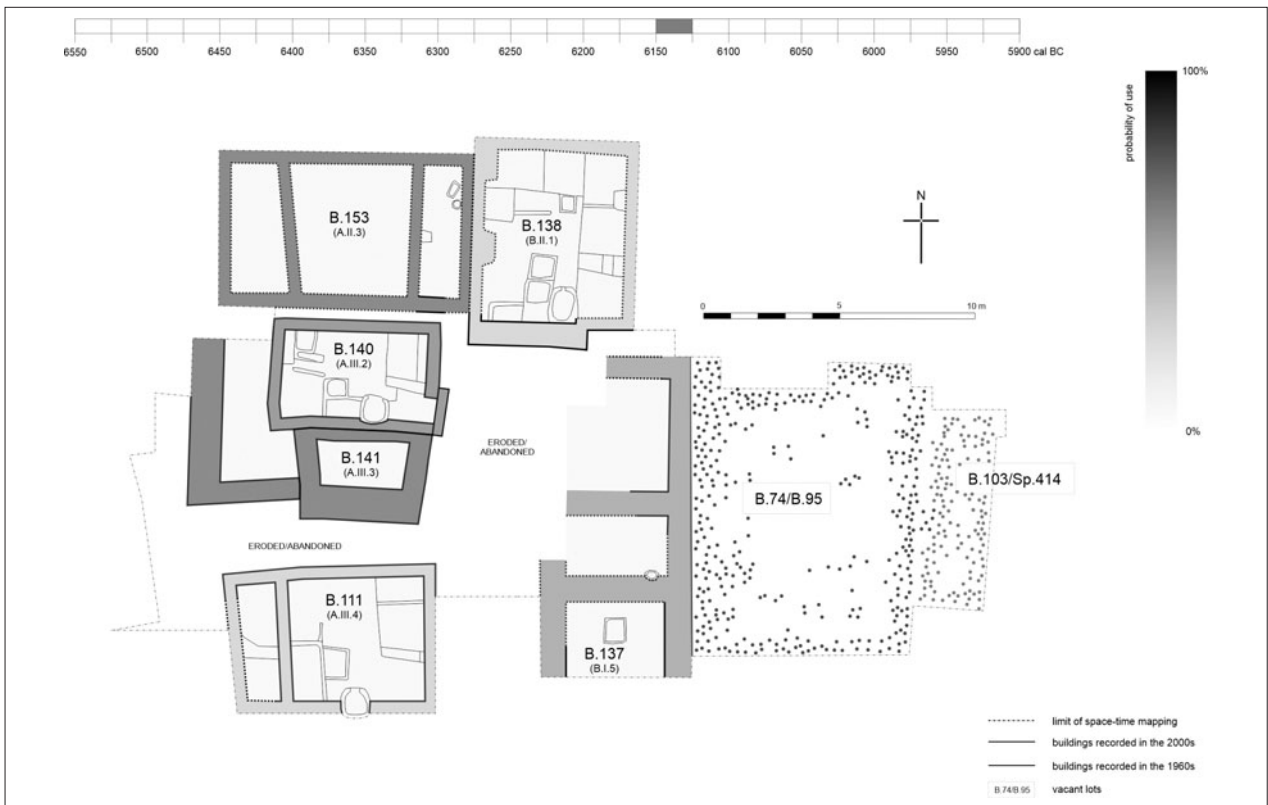


Figure 34.67. Plan of the uppermost part of the East Mound in 6150–6125 cal BC.

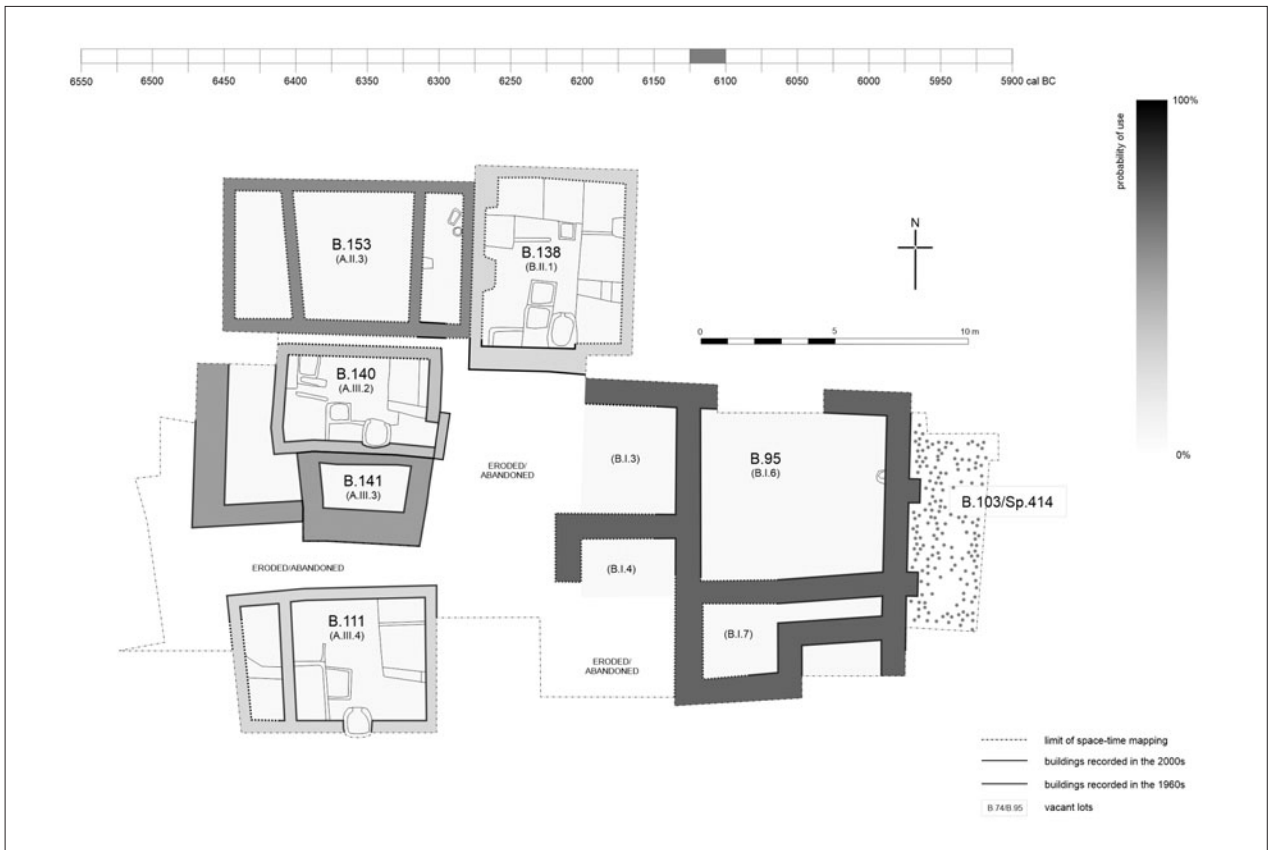


Figure 34.68. Plan of the uppermost part of the East Mound in 6125–6100 cal BC.

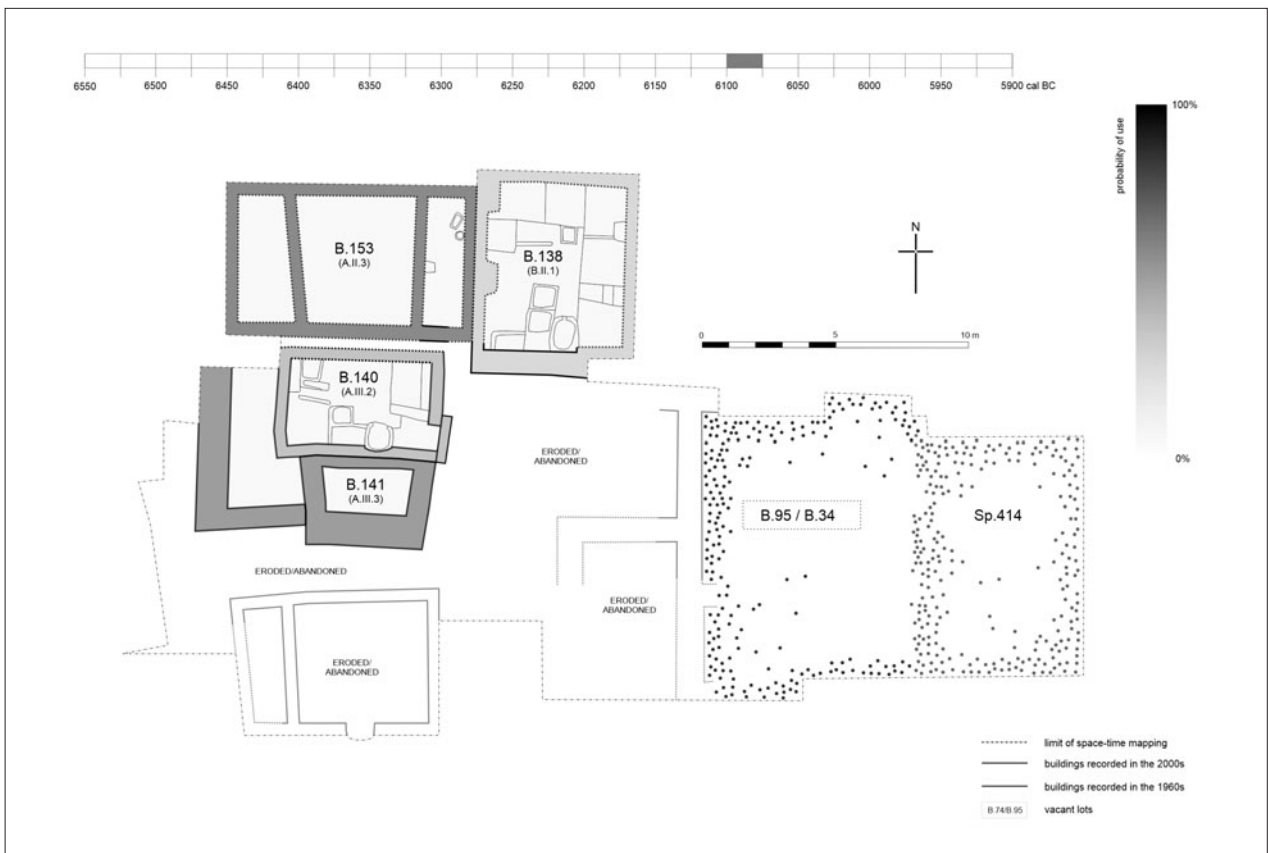


Figure 34.69. Plan of the uppermost part of the East Mound in 6100–6075 cal BC.

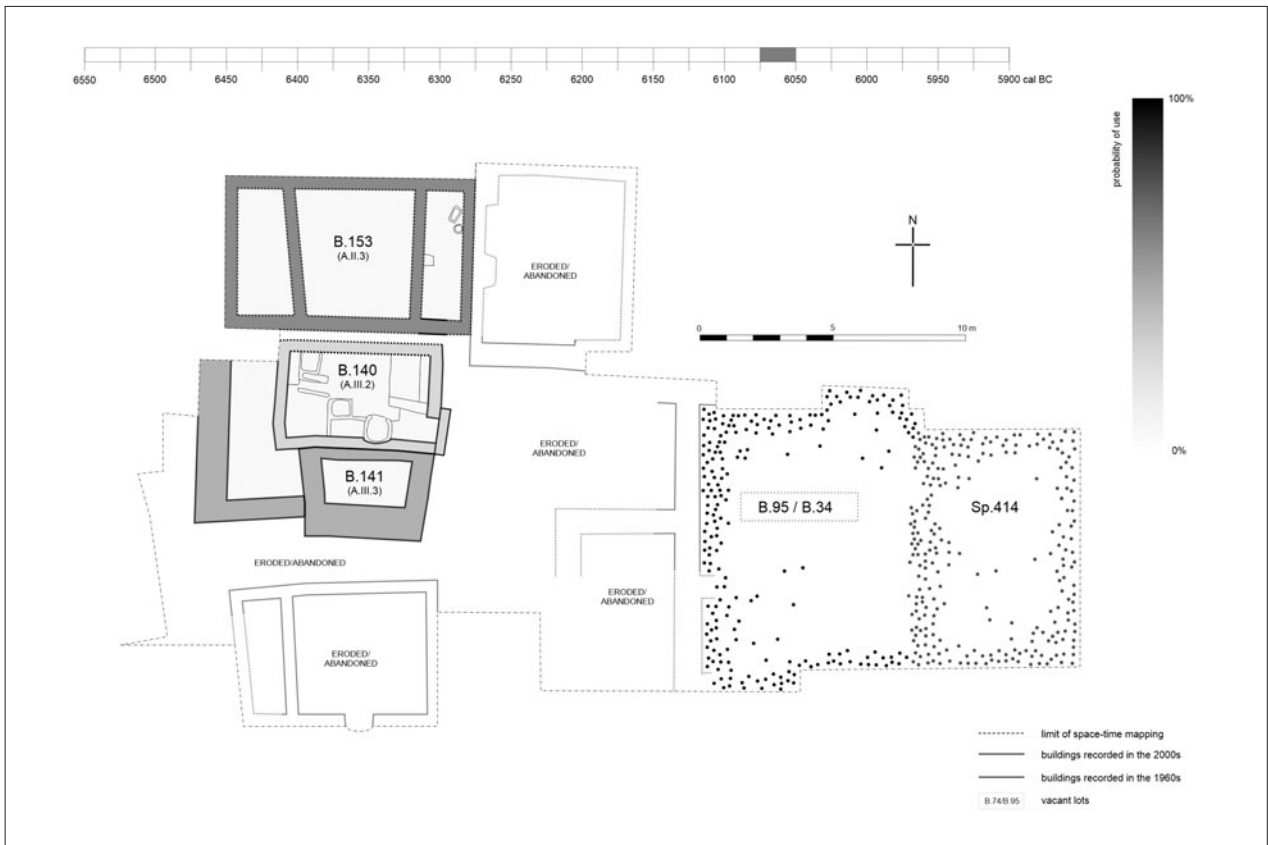


Figure 34.70. Plan of the uppermost part of the East Mound in 6075–6050 cal BC.

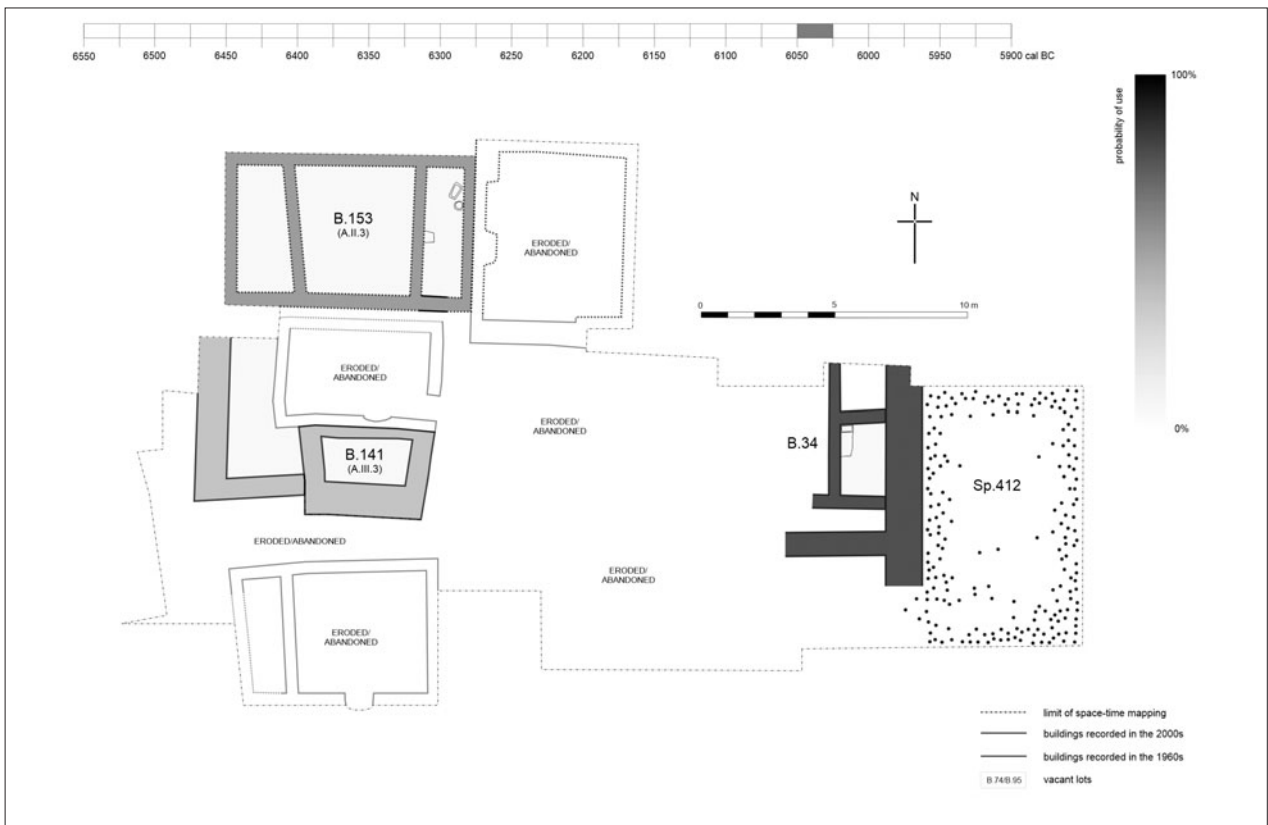


Figure 34.71. Plan of the uppermost part of the East Mound in 6050–6025 cal BC.

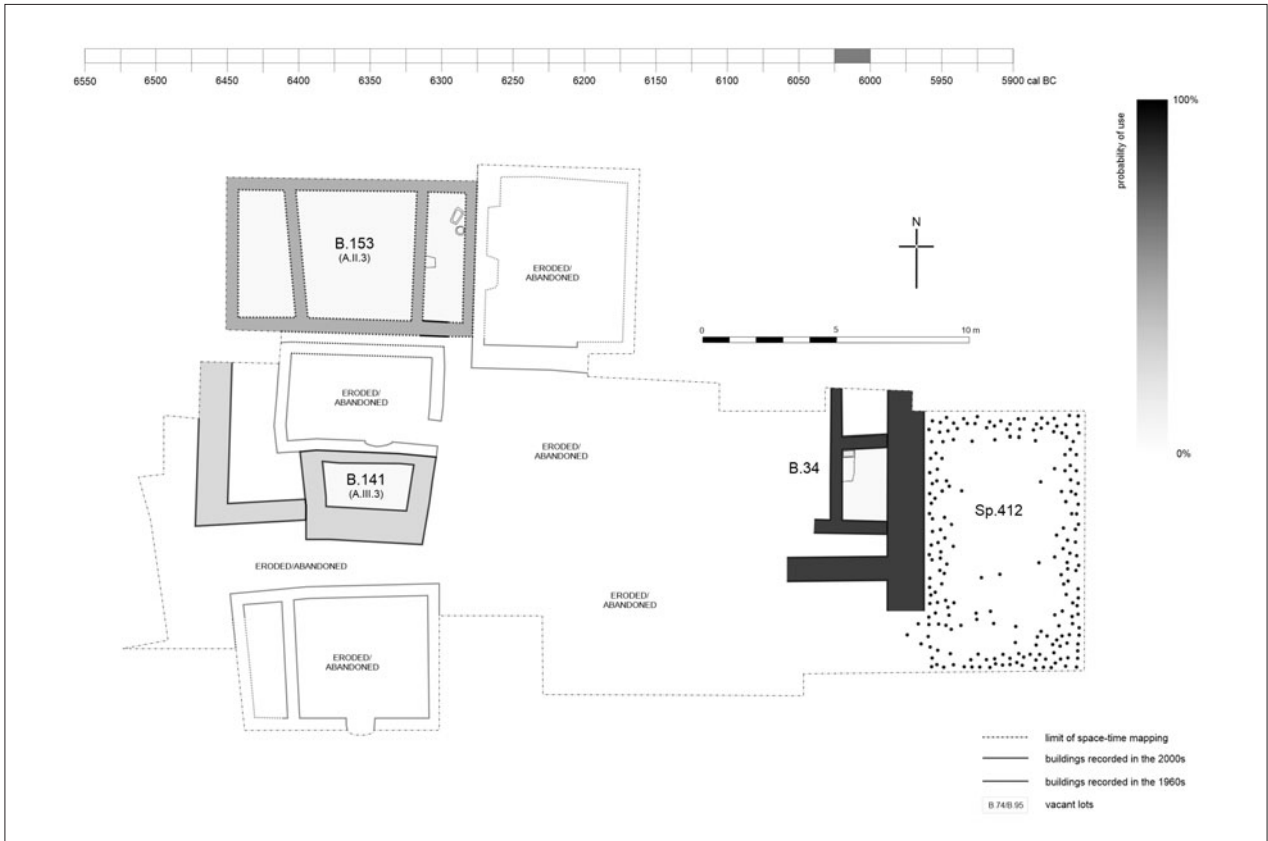


Figure 34.72. Plan of the uppermost part of the East Mound in 6025–6000 cal BC.

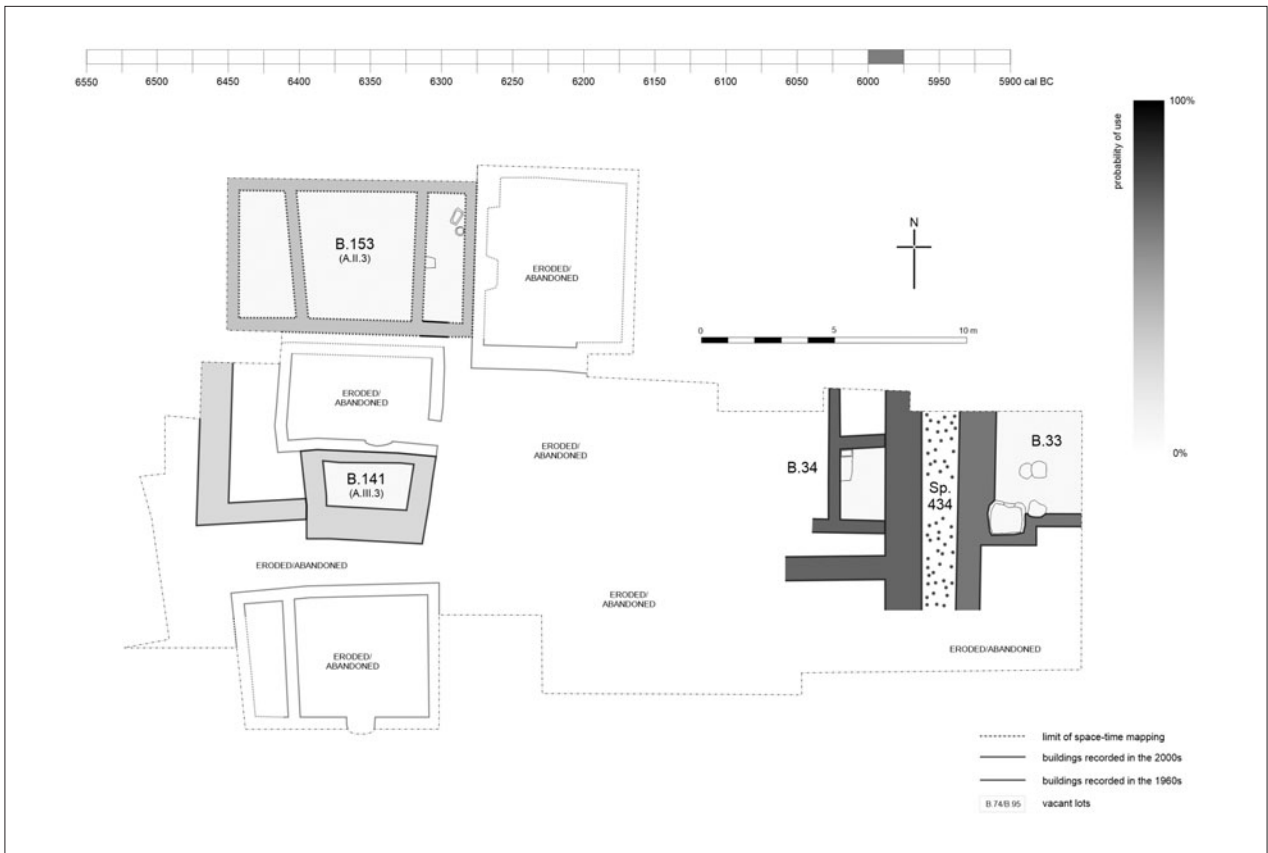


Figure 34.73. Plan of the uppermost part of the East Mound in 6000–5975 cal BC.

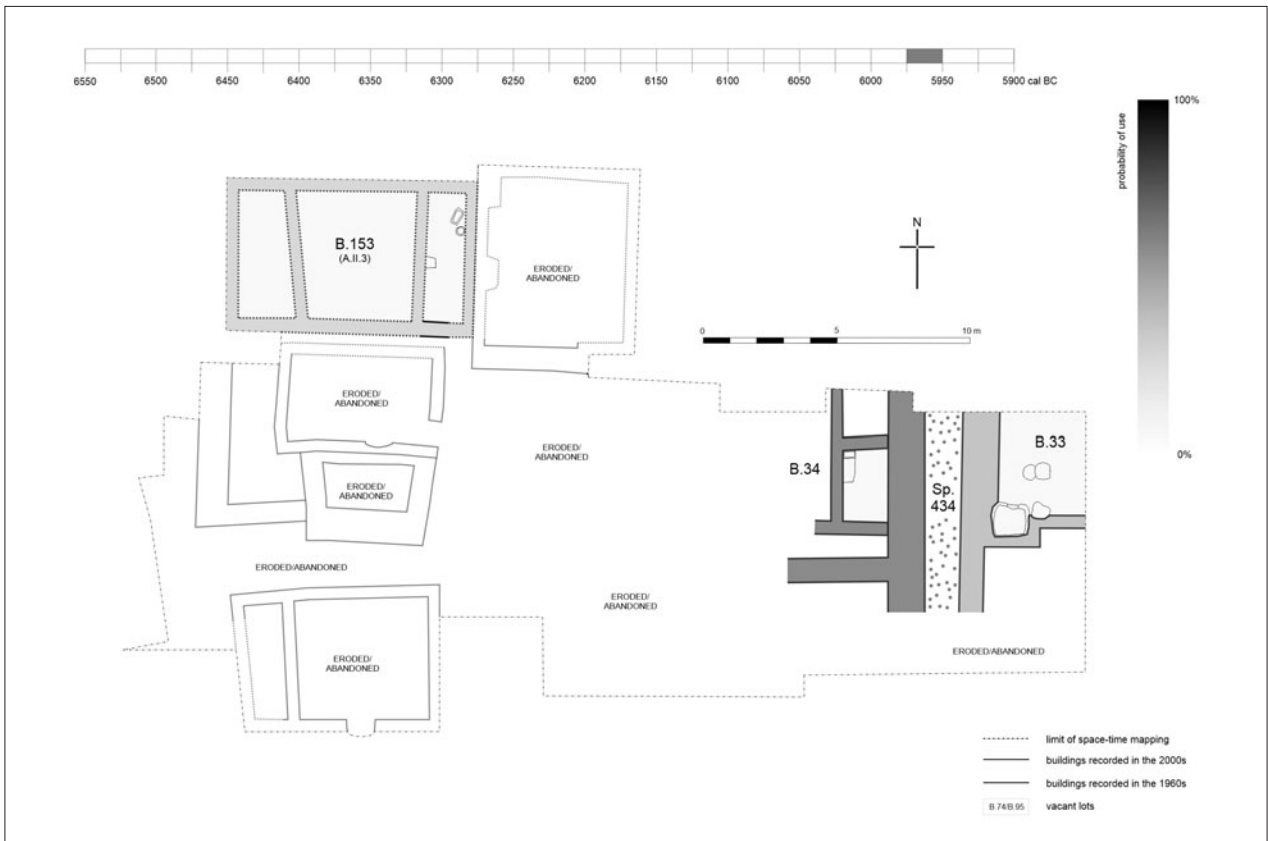


Figure 34.74. Plan of the uppermost part of the East Mound in 5975–5950 cal BC.

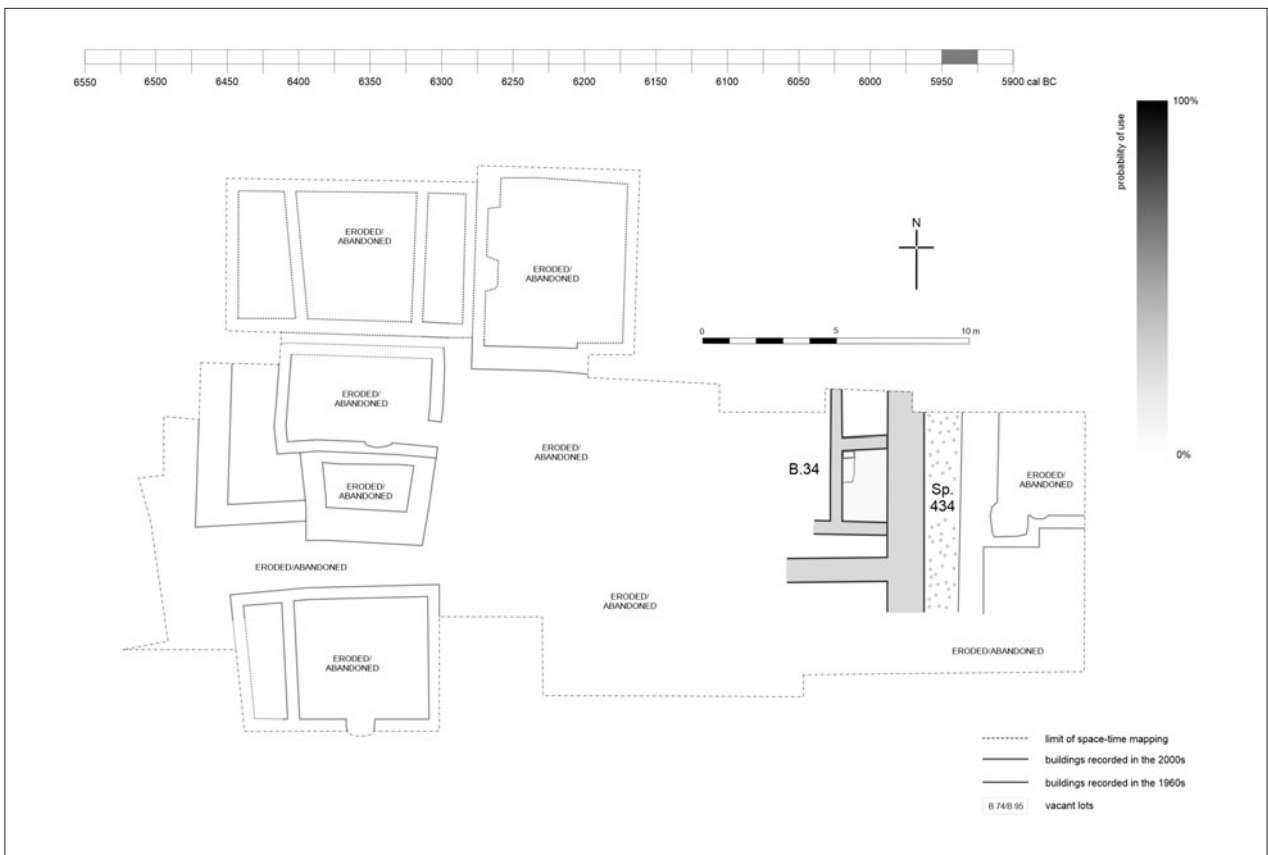


Figure 34.75. Plan of the uppermost part of the East Mound in 5950–5925 cal BC.

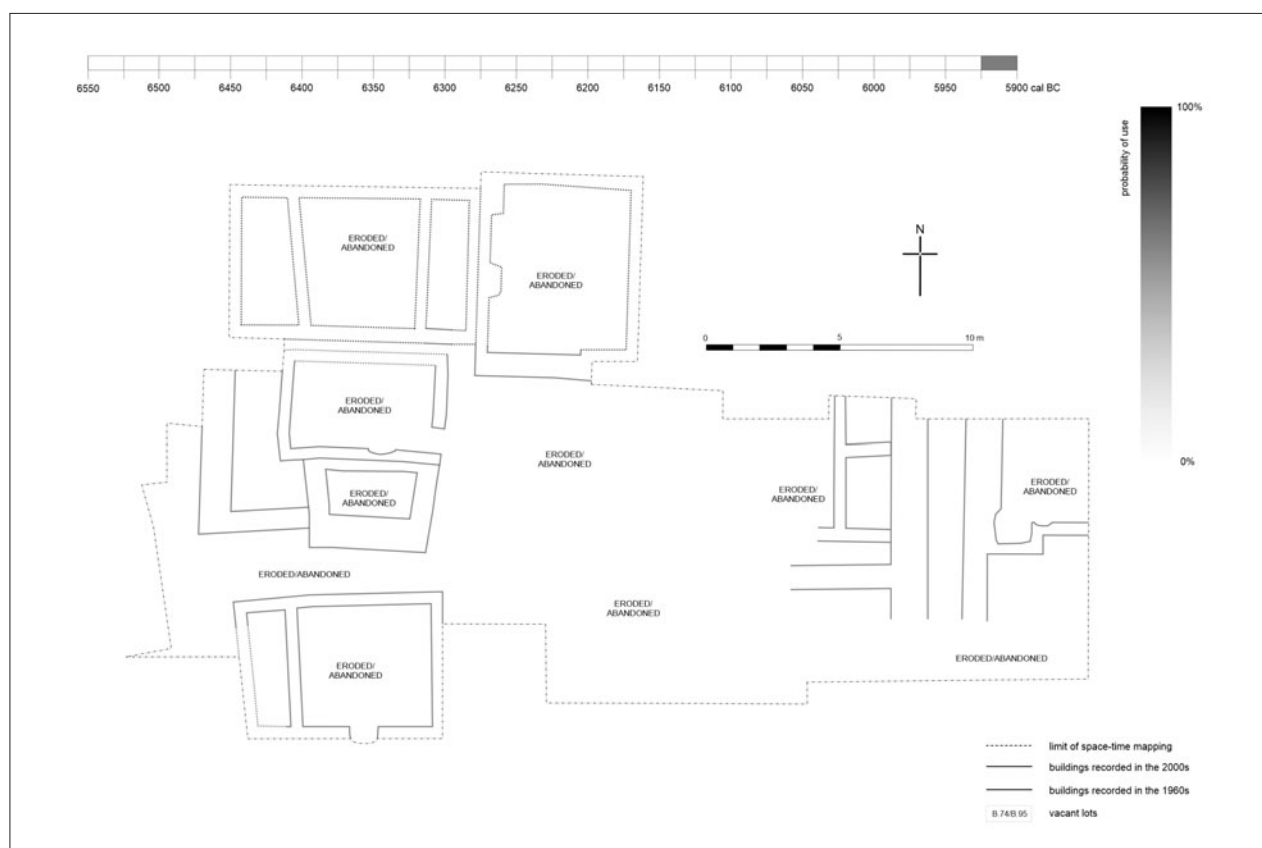


Figure 34.76. Plan of the uppermost part of the East Mound in 5925–5900 cal BC.