

Çatalhöyük Excavations: The 2009–2017 Seasons

Edited by
Ian Hodder

Colour figures for Chapter 15. Building 96

James Taylor



Figure 15.1. North-facing photograph showing overview of Building 96, Sp.370 (photograph by Jason Quinlan).



Figure 15.3. North-facing photograph showing northern end of Building 96, including the intact crawl-hole and associated post holes (photograph by Çatalhöyük Research Project).



Figure 15.4. Northeast-facing photograph showing the eastern and northeastern platforms, F.3508 and F.3507 respectively (photograph by Jason Quinlan).



Figure 15.5. West-facing photograph showing detail of the break in the plaster on the internal face of the western wall (F.4090) (photograph by Jason Quinlan).



Figure 15.6. Upward (west)-facing photograph showing internal detail of the Building 96 crawl-hole (F.3504) (photograph Çatalhöyük Research Project).



Figure 15.7. East-facing photograph showing the earliest surface in Space 444 (20890) (photograph by Maciej Chyleński).



Figure 15.8. North-facing daily sketch photograph of earliest excavated plaster floors in Space 370 ((20855), (20857) and (20866)) (photograph by Johanna Bergqvist).



Figure 15.9. East-facing photograph of Space 444 with remnant bins (F.8000 and F.8001) visible at north end (photograph, by Maciej Chyleński).



Figure 15.12. West-facing photograph of burials F.7010 and F.7011 (photograph by Johanna Bergqvist).

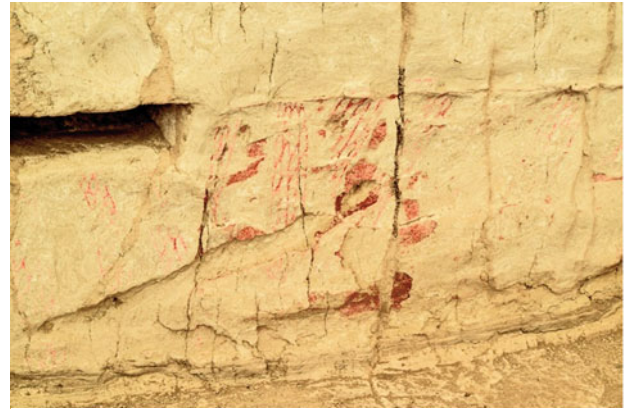


Figure 15.13. East-facing photograph of painting on east wall of B.96 (photograph by Gesualdo Busacca).



Figure 15.14. East-facing photograph of burial F.7008 and the cut for F.7007 (photograph by Johanna Bergqvist).



Figure 15.15. West-facing photograph of burial F.7003 (photograph by Alison Mickel).



Figure 15.17. Northeast-facing photograph showing white plaster floor surfaces ((19714) and (19713)) on the platform and across the central part of Space 370 (photograph by Jason Quinlan).



Figure 15.18. West-facing photograph showing animal bone cluster in Space 444 (20883) (photograph by Alison Mickel).



Figure 15.19. North-facing overview of the north end of Space 370, showing post-retrieval pits (F.3500, F3506 and F3510) (photograph by Johanna Bergqvist).

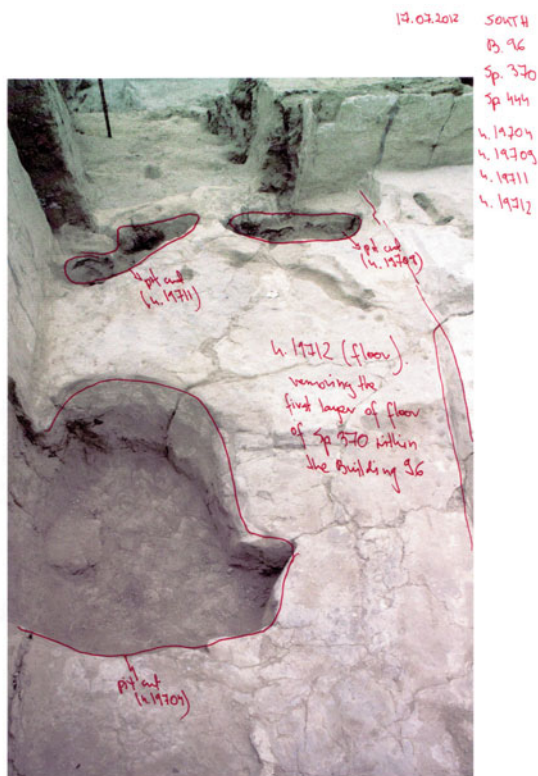


Figure 15.20. Daily sketch showing cuts (19711) and (19709) for retrieval pits F.3506 and F.3500 and cut (19704) for pit F.7000 in Building 96 (drawing by Agata Czeszewska).



Figure 15.21. North-facing photograph showing primary infill of Space 370 (19227) and a cluster of animal bone, which may be associated with the large abandonment pit F.7000 and possibly linked to other bone concentrations throughout the primary fills of Space 370 (photograph by Johanna Bergqvist).



Figure 15.22. North-facing photograph showing the latest burnt infill deposits associated with northern Space 444 (photograph by Allison Mickel).