

Çatalhöyük Excavations: The 2009–2017 Seasons

Edited by
Ian Hodder

Supplementary material to Chapter 15. Building 96

James Taylor



Figure S15.1. East-facing overview of lower part of east wall and post-retrieval pit showing niche F.3511 (photograph by Çatalhöyük Research Project).



Figure S15.2. 'Box' or 'casement' foundations in Sp.558, to support the construction of Sp.444 (photograph Çatalhöyük Research Project).



Figure S15.3. South-facing photograph of pit F.7013 (photograph by Allison Mickel).



Figure S15.4. North-facing photograph of burial F.7015 (photograph by Scott Haddow).



Figure S15.5. East-facing photograph showing floors (20826) and (20833) (photograph by Kyle Lee-Crossett).

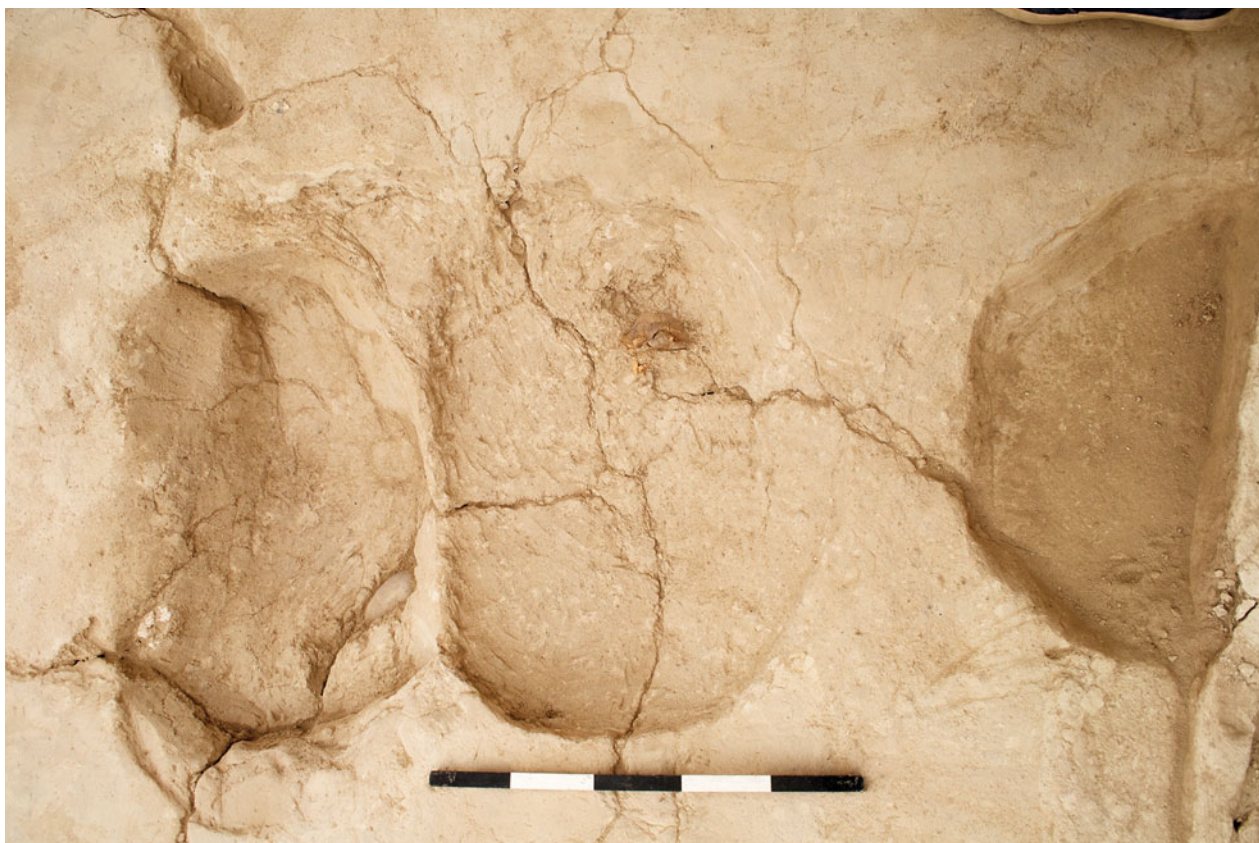


Figure S15.6. East-facing photograph showing compression fill/plaster cap associated with burials (units: 20802/19717, 20804, 20808 and 20834) (photograph by Johanna Bergqvist).



Figure S15.7. North-facing photograph of burial F.7002 (photograph by Scott Haddow).

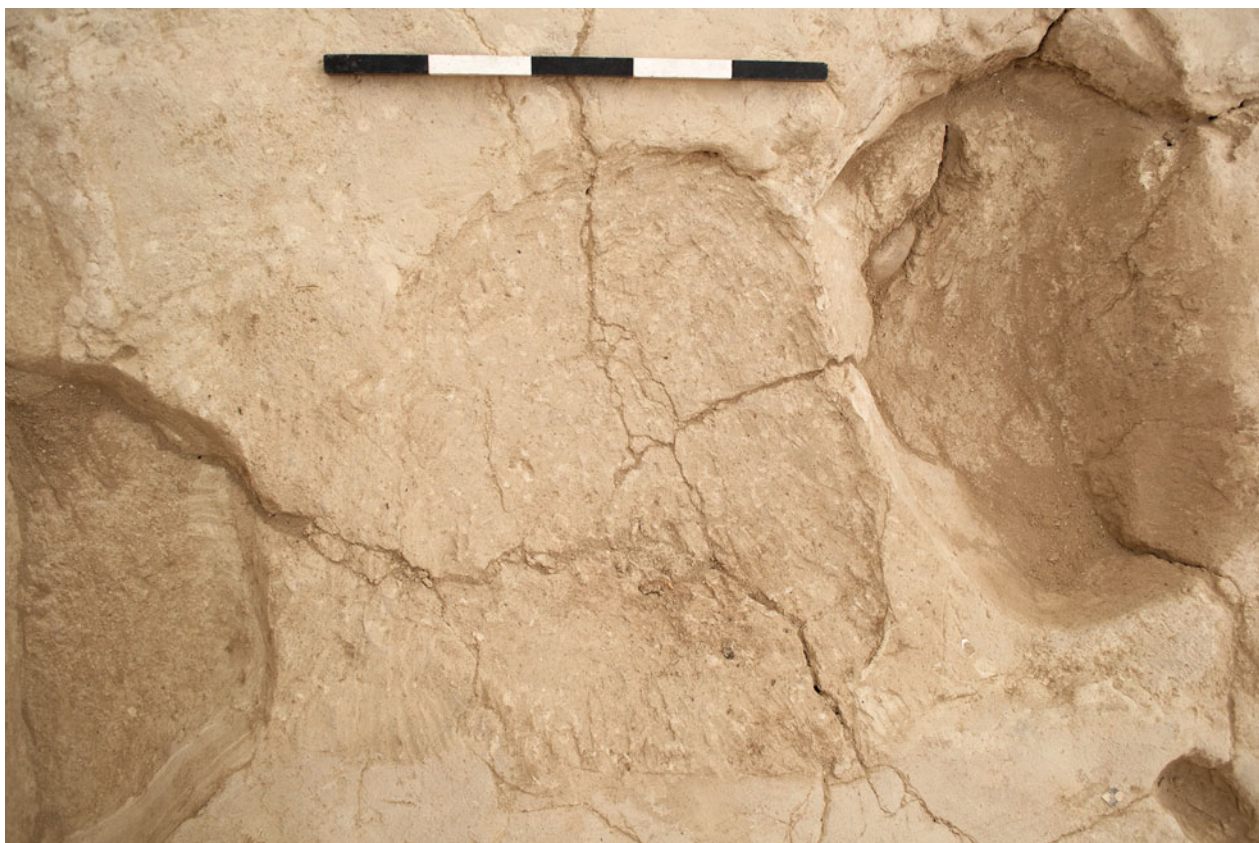


Figure S15.8. West-facing photograph showing make-up deposit (20803/20805) (photograph by Johanna Bergqvist).



Figure S15.9. North-facing photograph of burial F.7001 (photograph by Scott Haddow).



Figure S15.10. North-facing photograph of probable burial cut (19716), with fill (18715) remaining in situ (photograph by Barbara Betz).



Figure S15.11. West-facing photograph showing large pit adjacent to the western wall (F.7000) (photograph by Agata Czeszewska).



Figure S15.12. North-facing photograph of building infill; note the infilled crawl hole to the north of Sp.370 (infill: 19240) (photograph by Lisa Yeomans).