

Çatalhöyük Excavations: The 2009–2017 Seasons

Edited by
Ian Hodder

Supplementary material to Chapter 29. Building 129

Burcu Tung



Figure S29.1. Ian Hodder examining the burial context with excavator Numan Aslan (to left) (photograph by Jason Quinlan).



Figure S29.2. Foundation trench F.7563 for the northern wall F.218/7558 of B.129 (photograph by Agata Czeszewska).



Figure S29.3. West-facing view of remnants of B.129's eastern wall east of B.131's eastern wall. The eastern platforms of B.131 can be seen below to the west (photograph by Jason Quinlan).



Figure S29.4. East-facing view of burial F.7709, skeleton (22615) (photograph by Scott Haddow).



Figure S29.5. West-facing view of skeleton (22620) in burial F.7714 (photograph by Scott Haddow).



Figure S29.6. Detail of anklet found around the ankle of skeleton (22620), recorded as 22623.x3 (photograph Jason Quinlan).



Figure S29.7. North-facing view of primary disturbed skeleton (19541) within burial F.3643 (photograph by Scott Haddow).

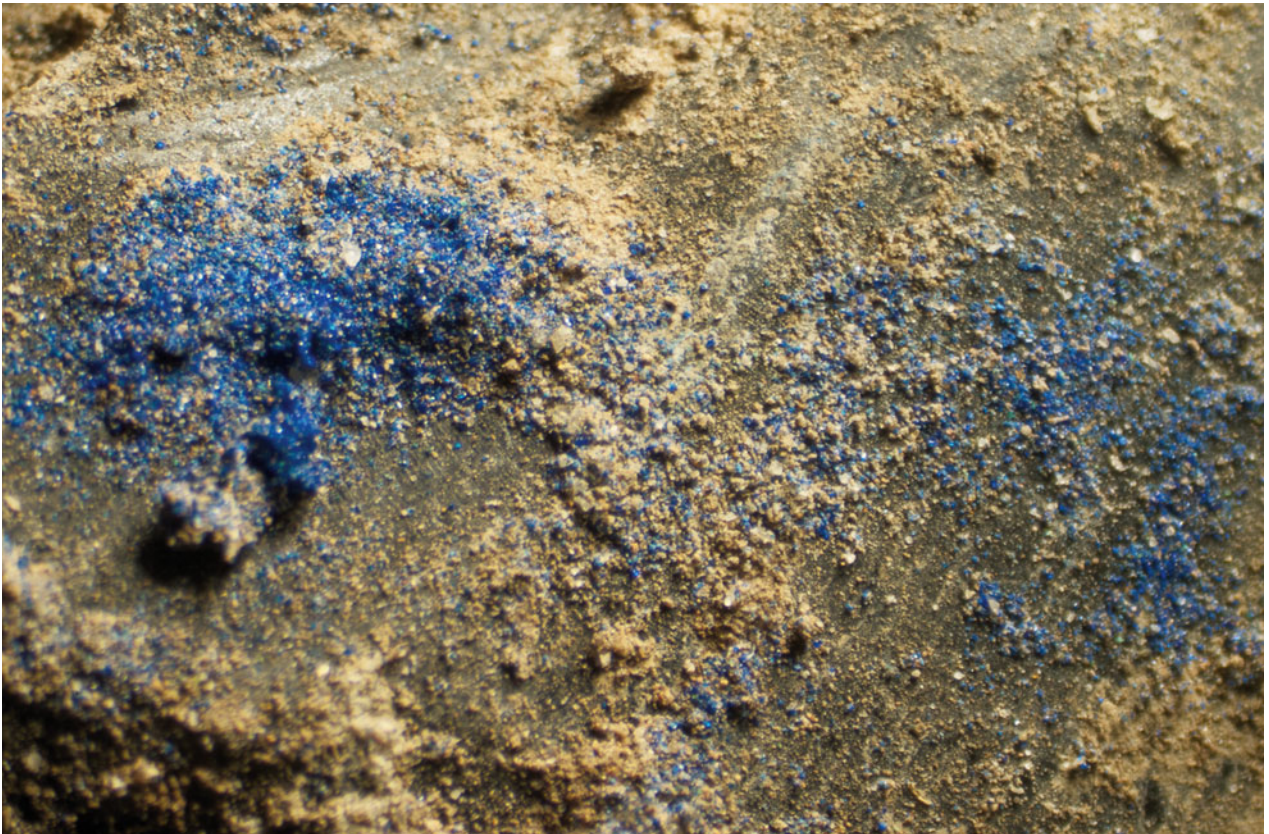


Figure S29.8. Close-up of blue pigment on obsidian mirror (photograph by Jason Quinlan).