

Çatalhöyük Excavations: The 2009–2017 Seasons

Edited by
Ian Hodder

Supplementary material to Chapter 31. Building 132 and related spaces

Arkadiusz Klimowicz and Burcu Tung



Figure S31.1. Orthophoto of the southern wall of Sp. 633/531 (based on a 3D model made by Jason Quinlan)



Figure S31.2. South-facing view of hearth F.8327 by the southern wall of Sp.633 (photograph by Jason Quinlan).



Figure S31.3. West-facing view of floor of oven F.8318 abutting the western wall of Space 531, F.7346 (photograph by Arek Klimowicz).



Figure S31.4. North-facing view of bench F.7879, with its core (32794) and remnants of plastered surface (32784) (photograph by Jason Quinlan).



Figure S31.5. A shallow depression lined by phytoliths, F.8323 (photography by Duygu Ertemin).



Figure S31.6. Pit F.8330 with cluster (32775) on the side of its cut (photograph by Jason Quinlan).



Figure S31.7. Hearth F.7871 with rim (32703) and oven F.7732 in the background (photograph Arek Klimowicz).



Figure S31.8. North-facing view of make-up (32740) of bench F.7879 (photograph Duygu Ertemin).



Figure S31.9. Rows of beads in situ within the fill of burial F.8331, by right wrist, recorded as 32767.x9, x12 and x13 (photograph by Jason Quinlan).



Figure S31.10. South-facing view of burial F.8319 within platform F.7733 (photograph by Jason Quinlan).



Figure S31.11. East-facing view of make-up (32083) on platform F.7734. The orange deposit lining cut (32087) for burial F.7747 is packing (32088) (photograph by Arek Klimowicz).



Figure S31.12. North-facing view of burial F.7747 (photograph by Jason Quinlan).



Figure S31.13. Fire-spot F.7741 (photograph by Jason Quinlan).



Figure S31.14. Central post hole F.7740 (photograph by Jason Quinlan).



Figure S31.15. North-facing view of burial F.7738. A basket imprint abuts the edge of the cut for skeleton (32043) (photograph by Jason Quinlan).



Figure S31.16. South-facing overview of the southern activity area. The far-left oven is F.7854 and next to it niche F.7855. To the front left is hearth F.7871, with bin F.7867 in the centre and to the right oven F.7868 (photograph by Jason Quinlan).



Figure S31.17. East-facing view of severely truncated fire installation F.7868 (photograph by Duygu Ertemin).



Figure S31.18. Burnt layer (32038) on platform F.7734, immediately next to burial fill (32040) (photograph by Jason Quinlan).



Figure S31.19. Shell 30575.x1 placed immediately under bin F.7139 (photograph by Jason Quinlan).



Figure S31.20. Orthophoto of post-retrieval pit F.7873 (orthophoto from a 3D model created by Jason Quinlan).

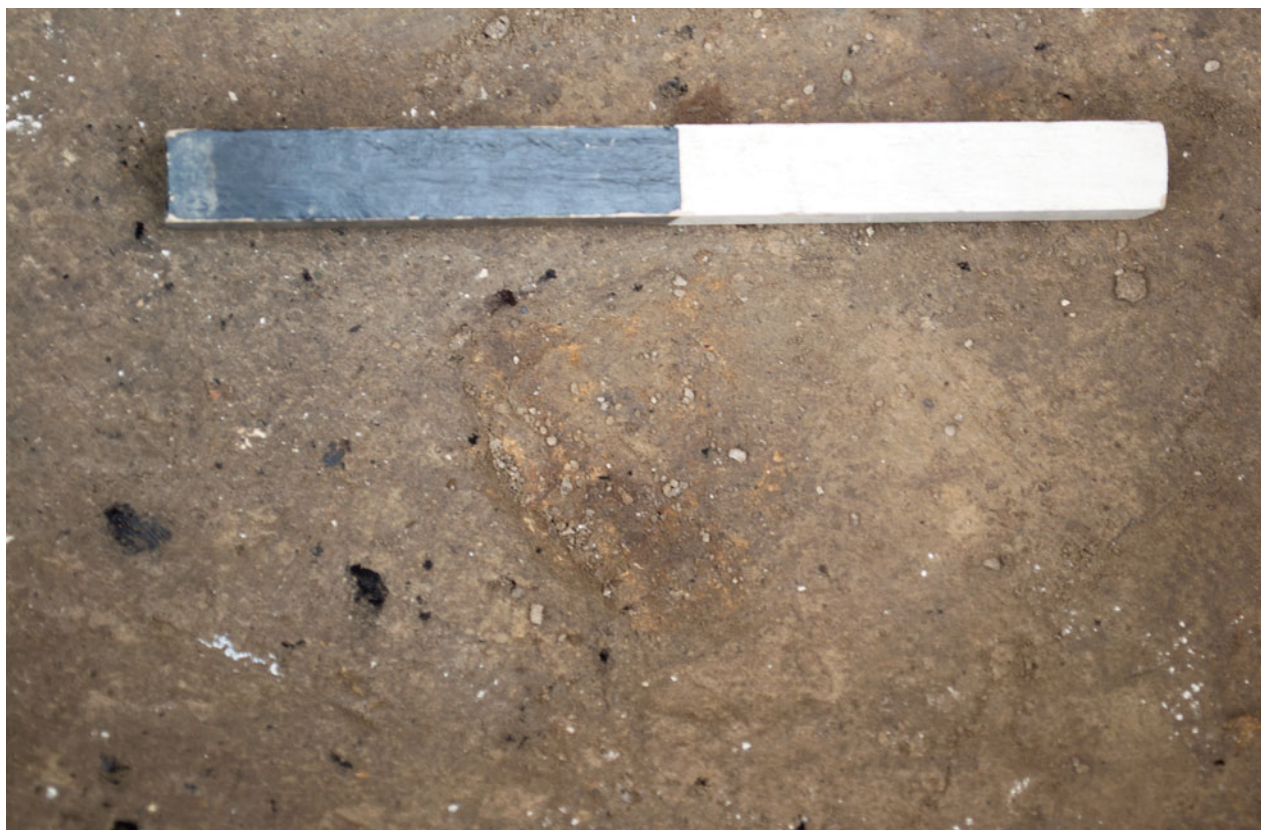


Figure S31.21. Post mark (31592) within the northern end of the post-retrieval pit F.7873 (photograph by David Fallon).



Figure S31.22. Orthophoto of post retrieval pit F.7724 (pit to the right) (orthophoto from a model created by Jason Quinlan).



Figure S31.23. A group of Unio shells within cluster (31585) (photo by Duygu Ertemin).



Figure S31.24. North-facing view of cut (31582) for post-retrieval pit F.7725 (photograph by Arek Klimowicz).



Figure S31.25. Orthophoto of post-retrieval pit F.7870 with F.7725 to its east (orthophoto from a 3D model created by Jason Quinlan).



Figure S31.26. North-facing view of burial F.7633 of infant (21676) (photograph by Scott Haddow).



Figure S31.27. North-facing view of burial F.7863 of adult female (21687) (photograph by Scott Haddow).



Figure S31.28. North-facing view of burial F.7864 of skeleton (21691) (photograph by Scott Haddow).



Figure S31.29. Burial F.7834 of adult female skeleton (21672) (photograph by Scott Haddow).